



Company Profile 2021

--Powerway Renewable Energy Co.,Ltd



CONTENTS

1

Company Profile

2

Global Strategies

3

Product Line

4

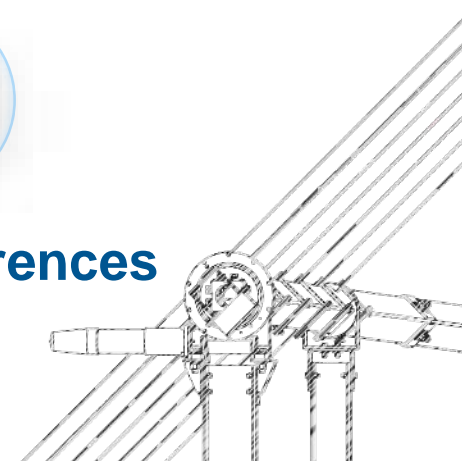
One-stop Service

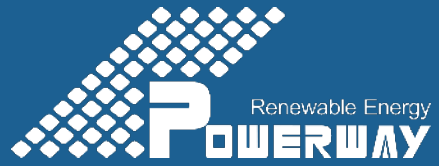
5

Supply Chain

6

Global References





Company Profile

01



Company Profile



- ▲ Powerway Renewable Energy Co.,Ltd.(abbreviated as 'Powerway') is one of the world's leading manufacture and solution providers of solar tracking ,solar mounting and roof solar racking system with 11 years of manufacturing and service experience. The headquarter is located in Foshan city,China and a subsidiary in Japan
 - ▲ Powerway also has rich experience in manufacturing and service of large-scale projects in the fields of multifunctional PV mounting system such as Fishery-solar hybrid power station, agro-photovoltaic hybrid power station, and PV carports.In addition,Powerway has a number of patents of product technologies and international certifications, such as BV, UL, CE, CPP, IEC, TUV and ISO9001.
- ▲ Based on the actual needs of customers, we provide one-stop service through the whole procedures from design, early stage exploration, foundation selection test, installation guidance on the site to maintenance guidance at later stage. Meantime, diversified and customized solutions can also present a competitive price and effective delivery time.
 - ▲ So far,The installed capacity of Powerway reached 11GW,which over 200 projects in more than 60 countries around world.We have established strategic partnerships with many well-known PV companies, becoming a confident brand in the PV industry.





Main Business

Power Tracking System、 Power Ground Mounting System、 PowerRoof System、 Agricultural Greenhouse、 Carport、 Ground Screw, and ramming piles,etc.



Patent

With multiple technical patents, our products also gain the international certifications including BV, UL, CE, CPP, IEC, TUV and ISO9001.



Profession

Based on the actual needs of customers, we provide one-stop service through the whole procedures from design, early stage exploration, foundation selection test, installation guidance on the site to maintenance guidance at later stage.



Strength

Until now, Powerway has provided more than 11 GWp of products and value-added services for solar plants in more than 60 countries and regions. Powerway also establishes strong strategic partnership with many renowned companies from domestic and abroad. Powerway now is marked with a global brand that earns the confidence and trust from its customers.



Headquarters
R & D



Demonstration Base



Aluminum
Production Base



Steel Production
Base



Japan Branch Office

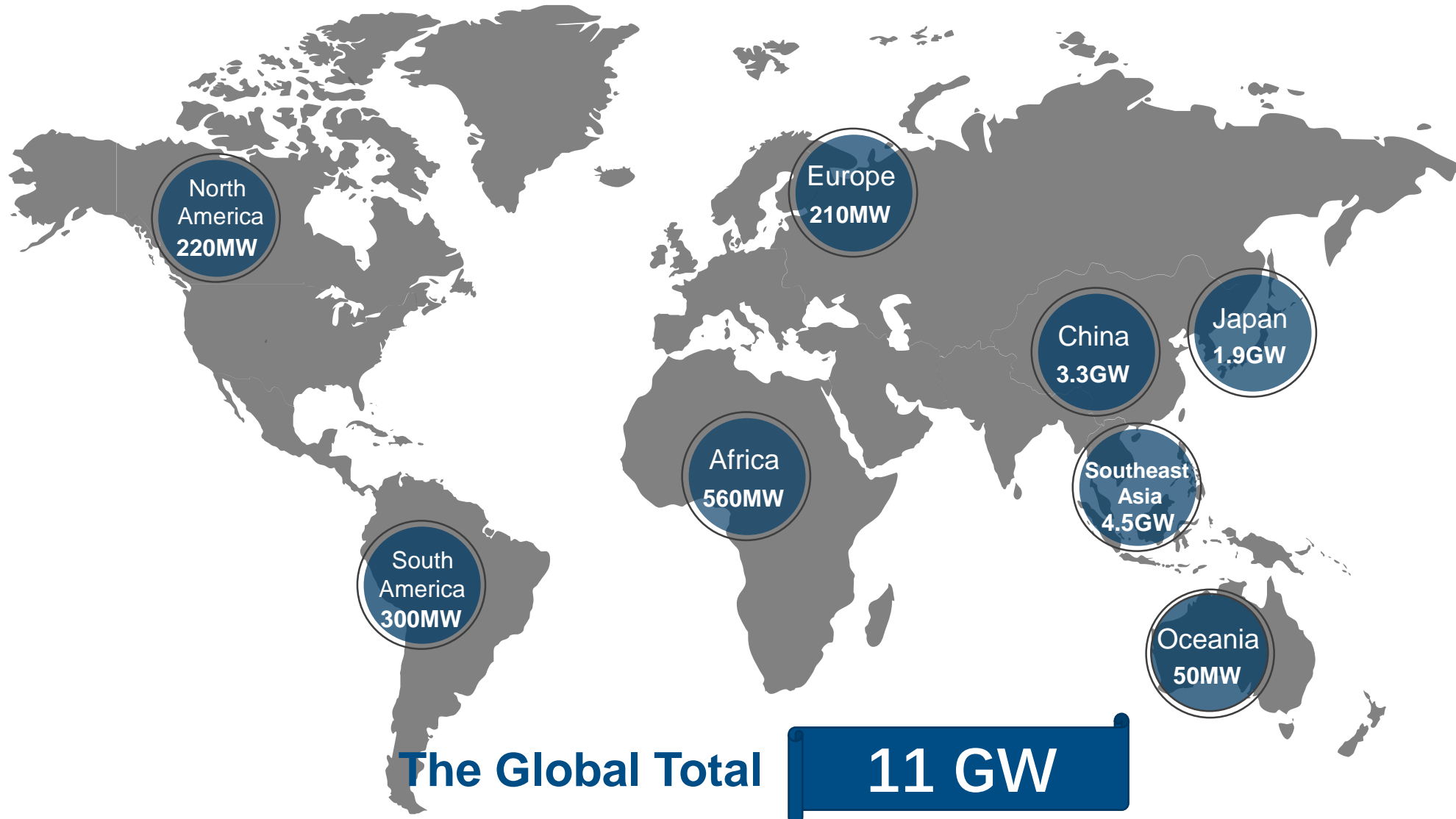


Global Strategies

02

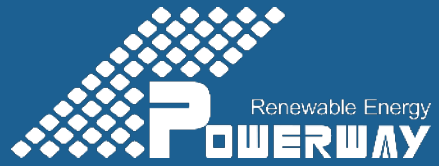


Global Strategies



Global Strategies - Partner





Product Line

03



Product Line - PowerFit



1

This is the basic model of PowerFit. It is driven by the horizontal single axis and arranged modules in single portrait.

2

PowerFit adapts monofacial and bifacial modules(include: Frameless module).

3

The new design improves the performance of wind load and snow load while the high power modules were installed.



Product Line - PowerFit-Plus



1

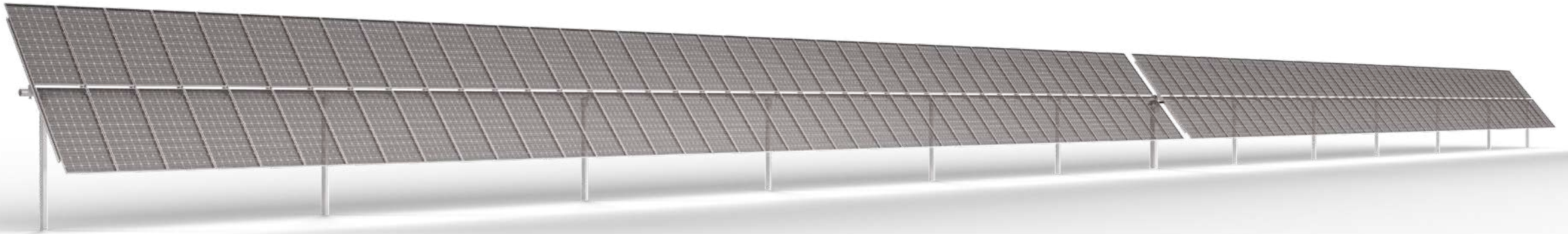
This is the advanced model of PowerFit.

2

It is driven by horizontal single axis and arranged modules in two portrait.

3

Compared with the system of fixed structure which installed monofacial modules, PowerFit-Plus increases 10~26% yield of power generation while the high bifacial modules were installed.



Product Line - PowerFit-DUO



1

PowerFit-DUO is composed of a single motor and two single-axis tracker which arranged modules in single portrait.

2

Compared with independent-row trackers, PowerFit-DUO has 50% less motors and controllers, further reducing costs and failure rates. With its stronger wind resistance, PowerFit-DUO realizes the installation arrangement in high wind speed areas..



Product Line - PowerFit-DUO



1

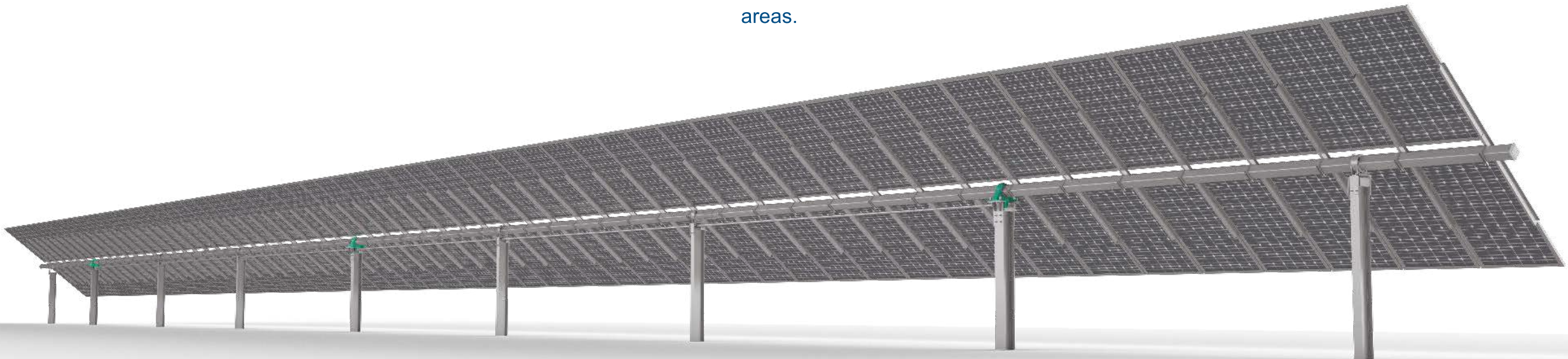
PowerFit-Blade is a new generation of single-axis multidrive transmission tracker of Powerway and adapt high power modules.

2

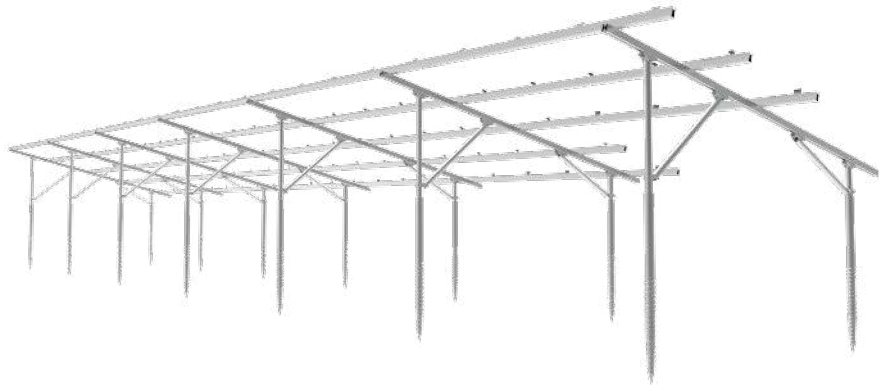
The compact design enables PowerFit-Blade to reduce the number of parts for higher installation efficiency. With its excellent performance, PowerFit-Blade realizes the installation arrangement in high wind speed areas.

3

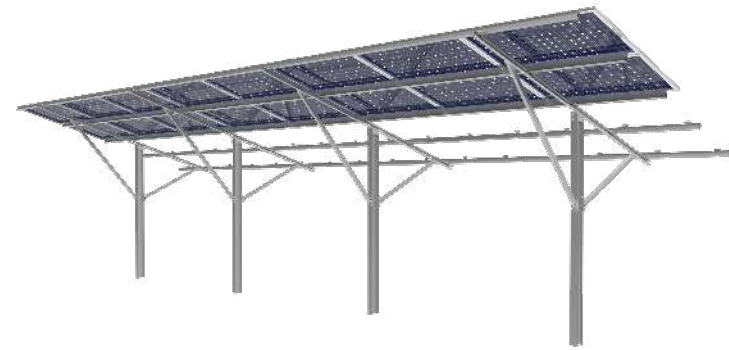
With intelligent tracking algorithms, PowerFit-Blade will maximize potential of each module in the power station.



Product Line - Ground Mounting System



AlumPower



DuraPower



UniPower



MacPower

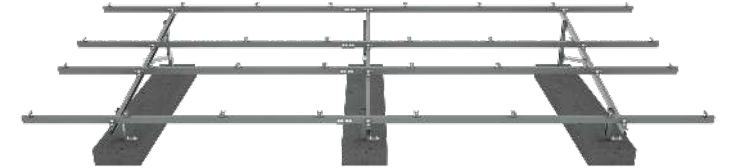
Product Line - PowerRoof System



AlumPower Mounting System



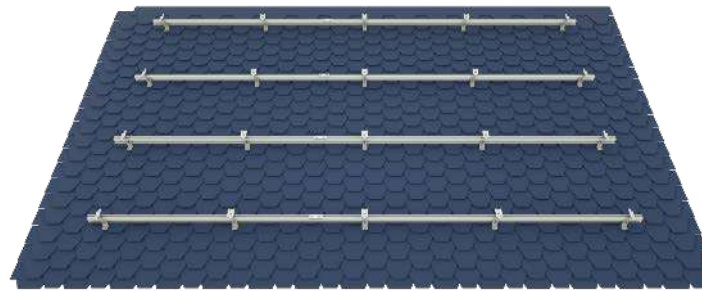
DuraPower Mounting System



MacPower Mounting System



Trapezoidal Metal Mounting System



Asphalt Tiles Flat Mounting System



Grazed Tiles Wooden Beam Mounting System

Product Line - Foundation Series

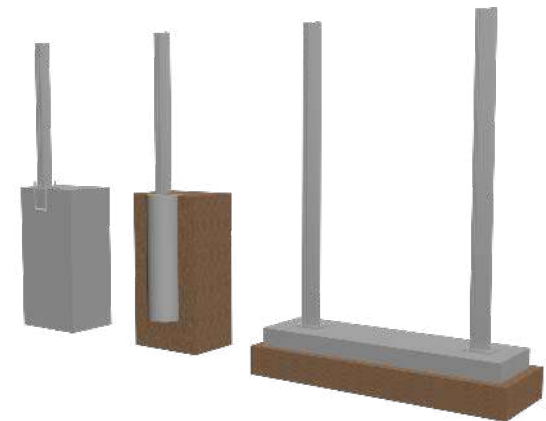


C Profile Steel

I Beam

Ground Screw

Concrete Foundation



Product Line - Module Clamp



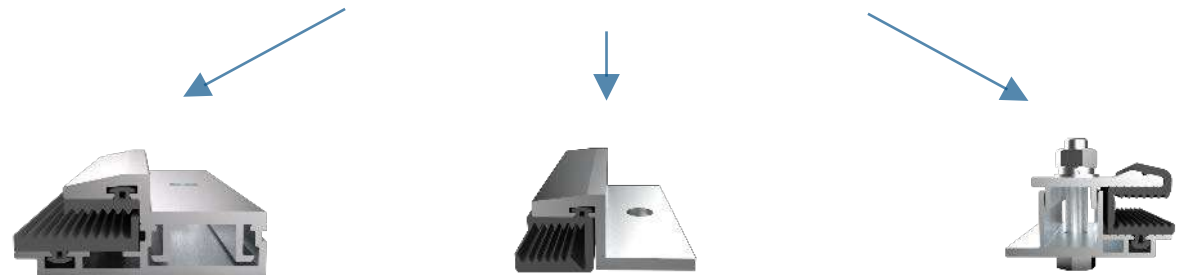
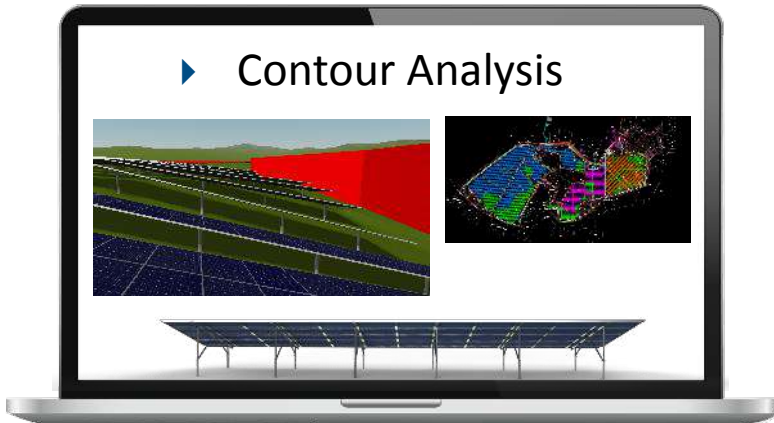
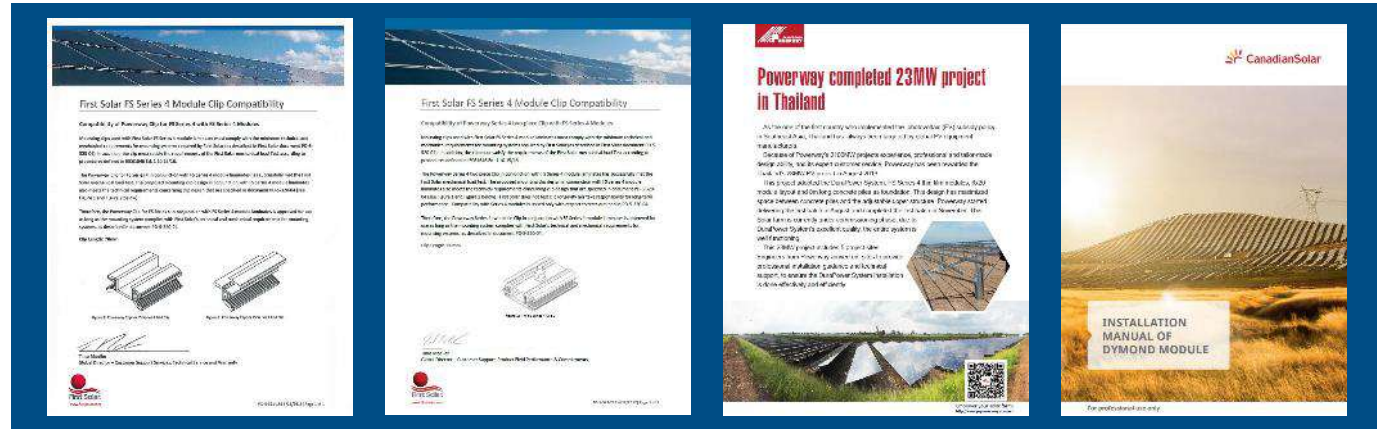
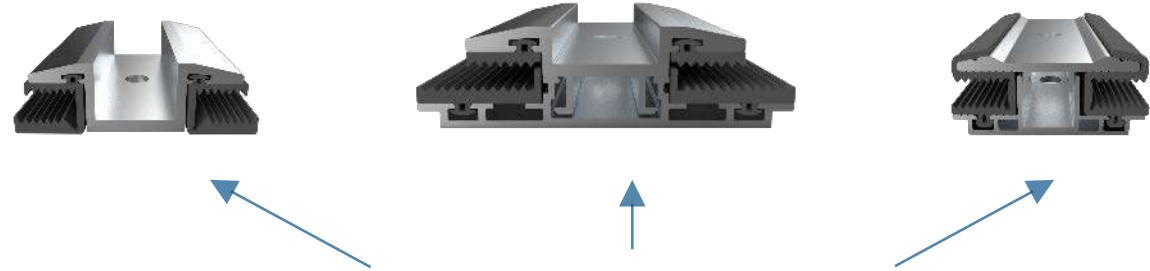
▶ High Matching Roofing Fixture



Snap lock type 01 Snap lock type 02 Snap lock type 03

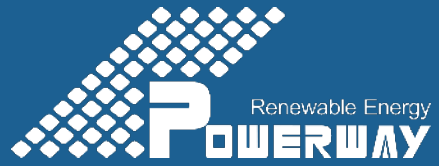


Butler type 01 Snap fit type 01 Standing seam type 01



Product Line - Other Station





One-stop Service

04



One-stop Service



Technical Experience



1000 +

11 GW+ Achieved Globally

Technical Team



40 +

Elite Designers, in Structure, Civil Engineering, Machinery, and Construction Management

Customized Scheme



150 +

Quick Design Scheme Output Suitable for Different Environment and Terrain, etc

Quick Respond to Customer Needs



2 Days

Standard Design Available on the Same Day and Customized Design Available within 2 Days upon Customer Request

One-stop Service



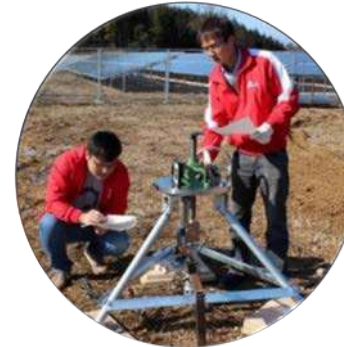
R & D

Cooperate with Customers to Research and Develop Products According to Different Situations



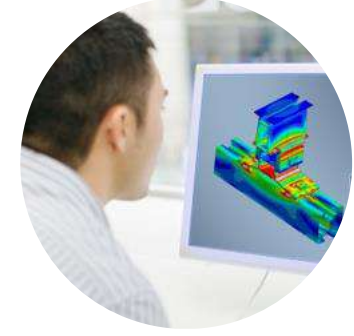
Researching

Pre-project Survey



Pullout Testing

Drawing Force Test



Design

Basic Design, Structural Design, Various Tests



Installation Instructions

Basic Construction Guidance, Construction Delivery



Electrical Adjustment

Conduct Electrical Commissioning after Installation



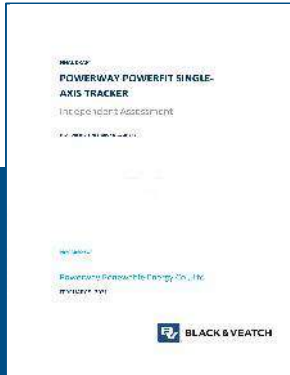
Maintenance Guidance

Post-installation Use and Maintenance Guidance

One-stop Service - The Patent Certificate



The Certification of BV



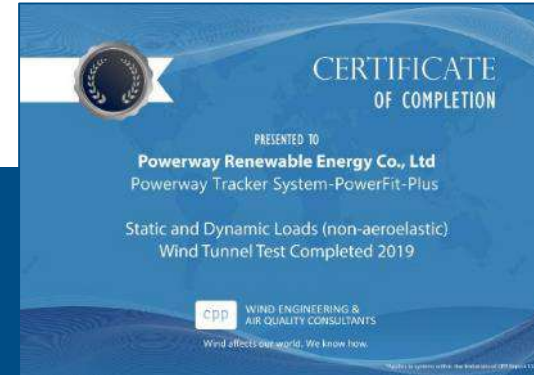
The Certification of Tracker Control Box



The Certification of Communication Box



The Certificate of Wind Tunnel Testing Powerway Silver



The Certificate of Solar Tracker Control Box



The Certification of IP66



The Certification of Conducting Strip



The Certification of UniPower



The Certification of DuraPower



The Certification of AlumPower

One-stop Service - The Patent Certificate



Chinese Invention Patent



China Utility Model Patent



China Design Patent



Japanese Patent

One-stop Service - Product Design Standard

European Standard : 《 BS EN1991_1-7:2005 》

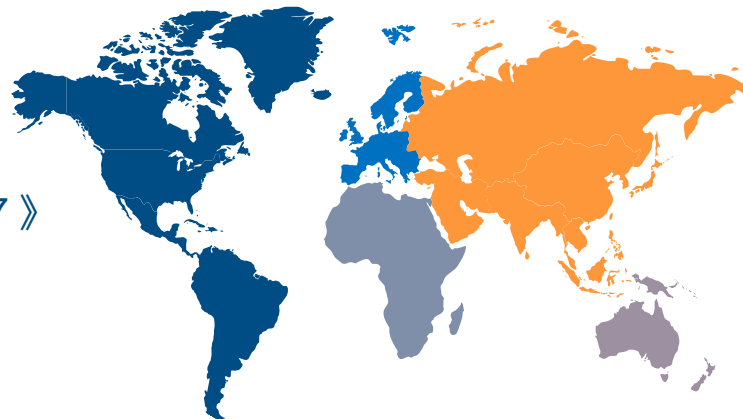
U.S. Standard : 《 ASCE_7-16 》

Brazilian Standard : 《 NBR 6123:1988 》

South African Standard : 《 SANS10160_1-7 》

England Standard : 《 BS6399 》

Taiwan Standard : 《 ISO1461-2009 》



China Standard : 《 GB50797:2012 》

《 GB50009:2012 》

Japan Standard : 《 JIS C 8955:2017 》

Korea Standard : 《 Korea Building Code 2016 》

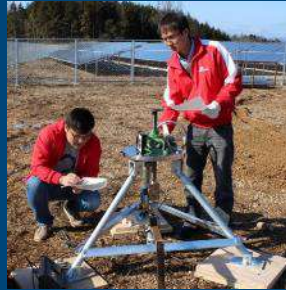
Philippine Standard : 《 NSCP 2015 》

Malaysian Standard : 《 MS1553-2002 》

One-stop Service - Product Test



Wind Tunnel Test



Drawing Test of Screw Pile



Tension Test



Loading Test



Column and Strut Pull Test



Hardness Test



Strength Test



IP Waterproof Test



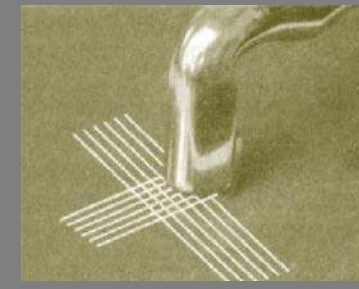
Steel Structure Film Thickness Test



Salt Test



Compression and Tensile Test



Cross-Cut Test



Temperature/Humidity Cycle Test

One-stop Service - Soil Analysis



Sandy Soil
with Gravel



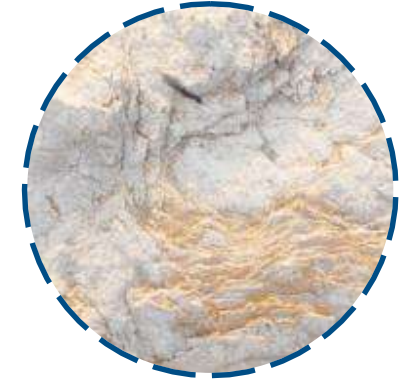
Gravel



Hard Clay



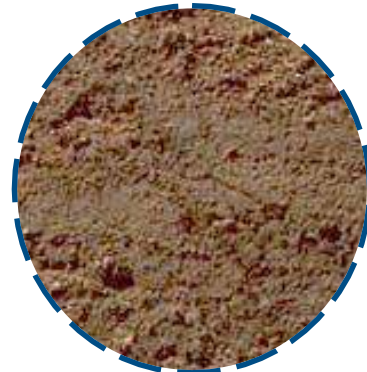
Weathered Rock



Rock



Clay with Gravel



Sandy Soil



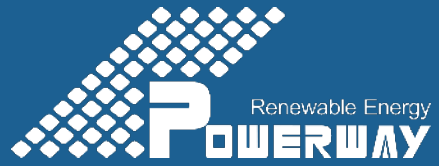
Murram



Clayey



Hard Clay with Gravel



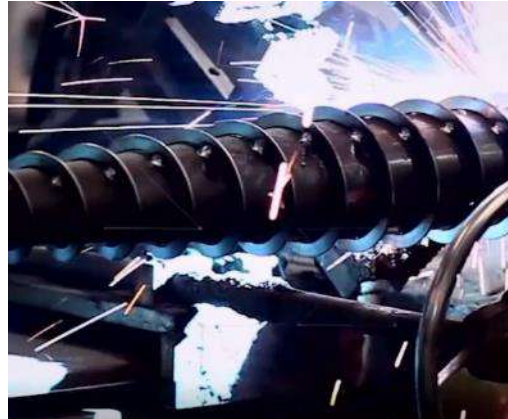
Supply Chain

05

Supply Chain - Production Base



Steel Production Capacity
of 13,000 Tons/Month



Aluminum Production Capacity of 6 Thousand Tons/Month



TÜV Certification

- ▶ Automatic Welding Process
- ▶ ISO1461:1999 Standard Hot Dip Galvanized Finish
- ▶ Good Corrosion Resistance
- ▶ Customized Solutions



Supply Chain - Packaging and Transportation



Carton & Pallet Packing	Iron Frame Packing	Wooden Frame Packing		Wooden Case Packing
For Fasteners, Pre-assembled Parts, and Certain Steel and Aluminum Connectors	For Steel Profiles	For Steel Profiles	For Aluminum Profiles	For Heavy Steel Connectors
Low Cost, High Protection Performance, and Easy Handling and Treatment	Stable Structure, Low Damage Rate, Convenient Loading and Unloading, and Suitable for Multiple Transfer	Low Cost, Good Protection Performance, and Easy Disposal	Low Product Damage Risk, Good Shock-proof Performance, Low Transportation Cost, and Easy Disposal	High Protection Performance
Fixing the Goods with Polyester Fiber Tape, and the Pallets with Wood Blocks, to Prevent the Goods from Moving During Transportation	Fixing the Goods with Polyester Fiber Tape to Prevent the Goods from Moving During Transportation	Fixing the Goods with Polyester Fiber Tape to Prevent the Goods from Moving During Transportation	Filling the gap inside the container with inflated bags to prevent the goods from moving during transportation	Fixing the Goods with Polyester Fiber Tape, and the Pallets with Wood Blocks, to Prevent the Goods from Moving During Transportation

Supply Chain - Packaging and Transportation



logistics System

Complete Global Logistic System to Meet the Needs of Customers

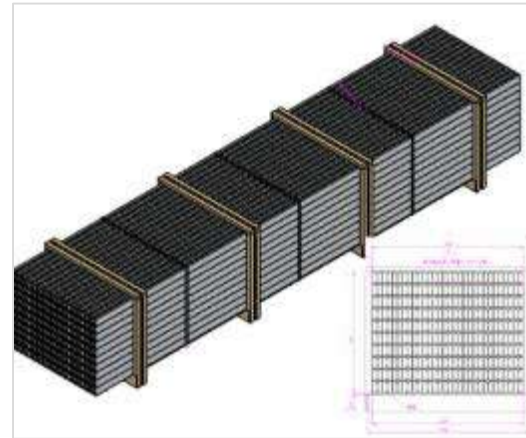
Logistics services

Complete Logistics Services from Trailer Transportation, Shipment, Customs Declaration, Quarantine Inspection, Shipping and Necessary Services at the Port of Destination for Import

Supply Chain - Packaging and Transportation



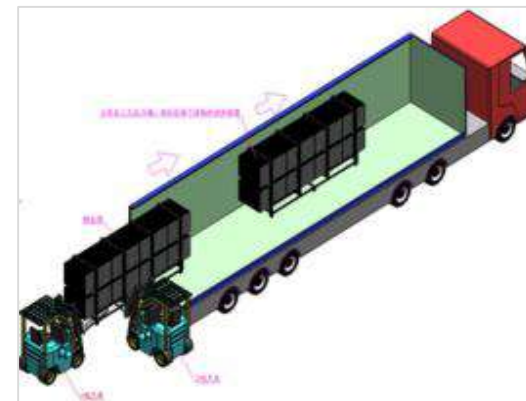
- ▶ Professional Packaging and Loading Process, Loading and Unloading Guidance



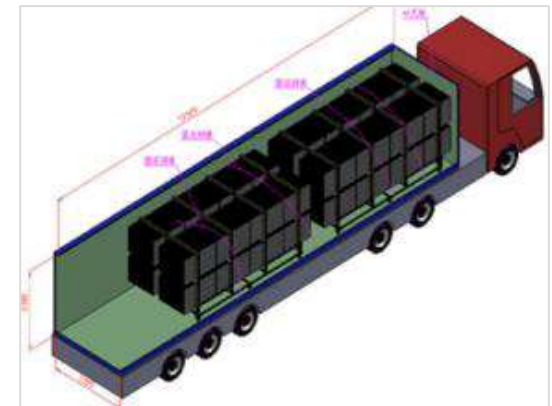
1. Packaging



2. Overstow



3. Truck Loading



4. Reinforce



Global References

06



Global References - Natural Environment

01



Snow
Environment

02



Coastal Gale
Environment

03



Sand
Environment

04



Mountain
Environment

05



Soft Soil
Environment

06



Other
Environmental

Global References - Snow Environment

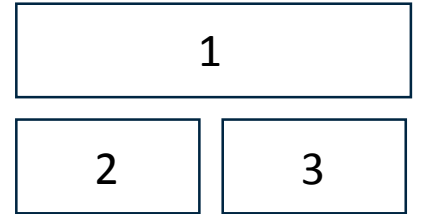


- | | |
|---|---|
| 1 | 2 |
| | 3 |

1. Hungary **54MW**
2. Hokkaido, Japan **2MW**
3. Mansion, Japan **12MW**



Global References - Coastal Gale Environment



- 1. Negros Island, Philippines **132.5MW**
- 2. Panlang Ningchuan, Vietnam **250MW**
- 3. Luzon Island, Philippines **63.3MW**



Global References - Mountain Environment



- 1
- 2
- 3

1. Malaysia **58.5MW**

2. Malaysia **38MW**

3. Liangshan, sichuan, China **30MW**

Global References - Sand Environment

1

2

3

3

1. Algeria **120MW**

2. Pakistan **100MW**

3. Shanxi, China **30MW**



Global References - Soft Soil Environment



1

2

3

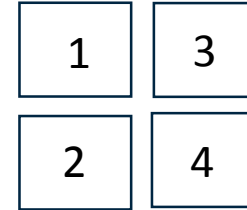
1. Vietnam **50MW**

2. Thailand **30MW**

3. Taiwan **10MW**



Global References - Others



- 1. Liansu Group, China **21.8MW**
- 2. Kaipin, Guangdong, China **10MW**
- 3. Guangdong, China **10MW**
- 4. Suixi, China **40MW**



ADD:NO.11 , Area C , Leping Industrial Park , Sanshui District , Foshan , Guangdong , China

TEL: (86)757 8766 2953

FAX: (86)757 8733 3552

WEB: www.pvpowerway.com

Email: info@pvpowerway.com